

Using the Betty's Brain System at Home

Teachable Agents Group
Vanderbilt University
March 4th, 2011

Introduction

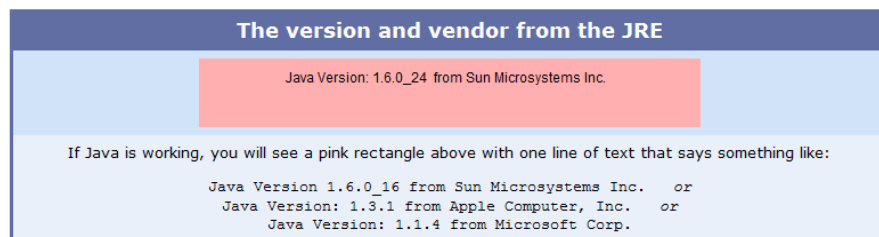
This letter will tell you and your parents everything you need to know about logging into the Betty's Brain system from home.

Required Software

In order to use Betty's Brain, you will need either a Mac or a Windows PC with Java 1.5 or later installed. To check your Java version, you can open a web browser (internet explorer, firefox, safari, etc...) and navigate to <http://javatester.org/version.html>. When you are there, you should see a screen similar to this one:

Method 1: Ask Java

This is my favorite - straight from the horse's mouth (so to speak). The Java Run-time Environment is aware of its version and the company that authored it. So I wrote a very simple applet (the source code is on the [About](#) page) that gets this information from the JRE and displays it in a pink rectangle.



As long as "Java Version" starts with 1.5 or 1.6, you can be sure that Betty's Brain will work on your system.

Obtaining Software

If your computer doesn't currently have Java installed, you can obtain it by going to <http://www.java.com/en/download/index.jsp> and clicking on "Free Java Download."

Logging into the Betty's Brain System

In order to log into the Betty's Brain system, open a web browser and navigate to <http://www.teachableagents.org/downloadbetty.php> and click "[Log In]" for the latest version of the system. This will take you to a login screen. Once there, use your registered username and password to gain access to the system.

The login screen looks like this:

You must be signed in to access this page.

Sign In

Login

Password

When you successfully login, the screen looks something like this:

Signed in as student5. [Home](#) | [Change password](#) | [Edit profile](#) | [Customize teachable agent](#) | [Sign out](#)

Sign in successful.

Betty's Brain Portal

Assignment: **Climate Change Part 1**

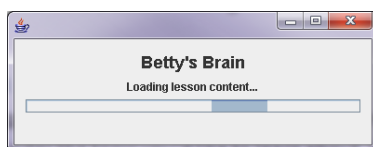
- [View your map](#)
- [View your notes](#)
- [Teach your agent](#)

Note that when you login, you will have a different assignment.

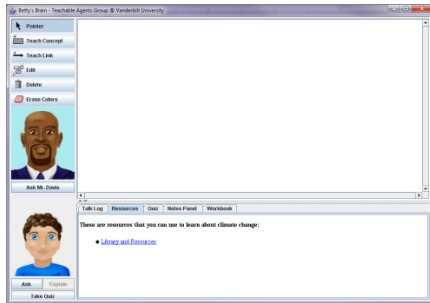
Starting Betty's Brain

Once you have successfully logged into the system, you can start the Betty's Brain program by clicking on the **Teach your agent** link under the topic you'd like to learn about. In the above example, you would start teaching your student the **Climate Change Part 1** assignment by clicking on the **Teach your agent** link below **Climate Change Part 1**.

Once you click the **Teach your agent** link under the topic you'd like to work with, the following screen should appear:



In some web browsers (for instance, Google Chrome), java files are downloaded instead of opened. If you don't see the screen above within 30 seconds, look in your browser's download location for a file similar to "80.jnlp" and double-click this file. Once the program has finished loading, the regular Betty's Brain interface window should appear:



Closing Betty's Brain

When you are done using the Betty's Brain program, you can end your session by simply closing the Betty's Brain window. Upon closing the window, all of your progress is uploaded to the Vanderbilt server. ***Please note, if you are not connected to the Internet when you close Betty's Brain, your data will not make it to the Vanderbilt server. Please be sure to make sure your computer is still connected to the Internet before closing the program.**

What to do When the Betty's Brain Software Freezes

Even though we hate to admit it, sometimes our program doesn't work as expected. If you are using Betty's Brain and the program becomes unresponsive or turns into an empty window, you'll need to force the program to close and restart it. ***Note that your concept map up to that point will not be lost. Your data is continuously saved to your hard drive, and it will be uploaded when you restart Betty's Brain.**

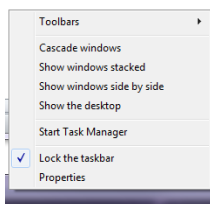
Restarting the Program: Windows Vista and Windows 7

If you are using a computer with the Microsoft Windows XP, Vista, or 7 operating system, you have two options for restarting the program.

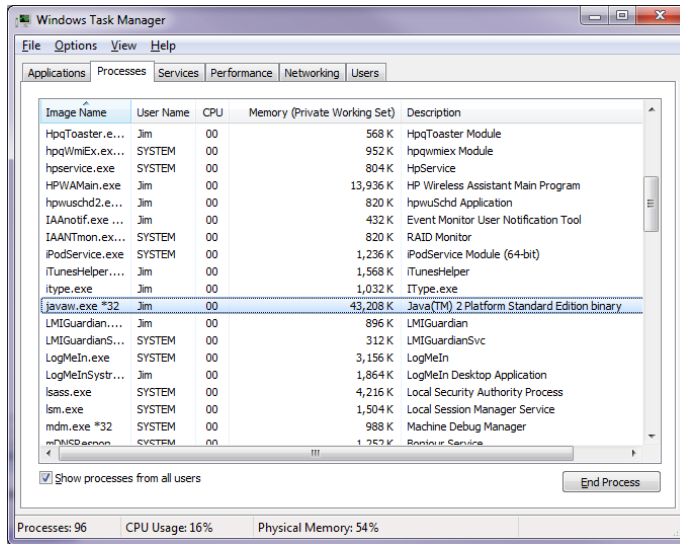
The first option is to log out of the computer and log back in. This option is necessary if you are currently logged into your computer as a "limited" or "guest" account.

The second option is to force-quit Betty's Brain. You can force-quit Betty's Brain via the following:

1. On Windows Vista and 7, right-click on the taskbar and select **Start Task Manager**. On Windows XP, right-click on the taskbar and select **Task Manager**.



- In the task manager, go to the **Processes** tab and select the process **javaw.exe**. It might also be called **javaw.exe *32**.



- Click on the **End Process** button.
- Close the task manager and return to your web browser.

Once you have quit Betty's Brain, you can relaunch it from your web browser.

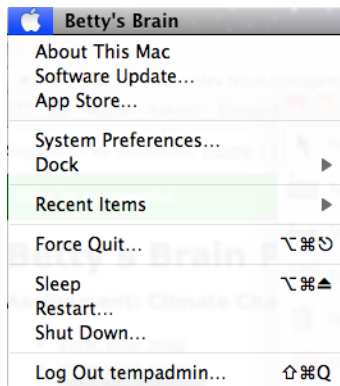
Restarting the Program: Mac OS X

If you are using a computer with the Mac OS X operating system installed, you have two options for restarting the program.

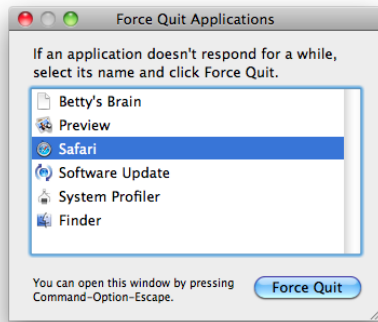
The first option is to log out of the computer and log back in. This option is necessary if you are currently logged into your computer as a "limited" or "guest" account.

The second option is to force-quit Betty's Brain. You can force-quit Betty's Brain via the following:

- Click on the Apple icon to the left of the words Betty's Brain. A menu should appear that looks like this:



2. In this menu, select **Force Quit**. A new window should appear:



3. From this menu, select **Betty's Brain** and then press the **Force Quit** button. If the computer again asks you if you want to quit Betty's Brain, again select **Force Quit**.
4. Re-launch the program from your web browser.